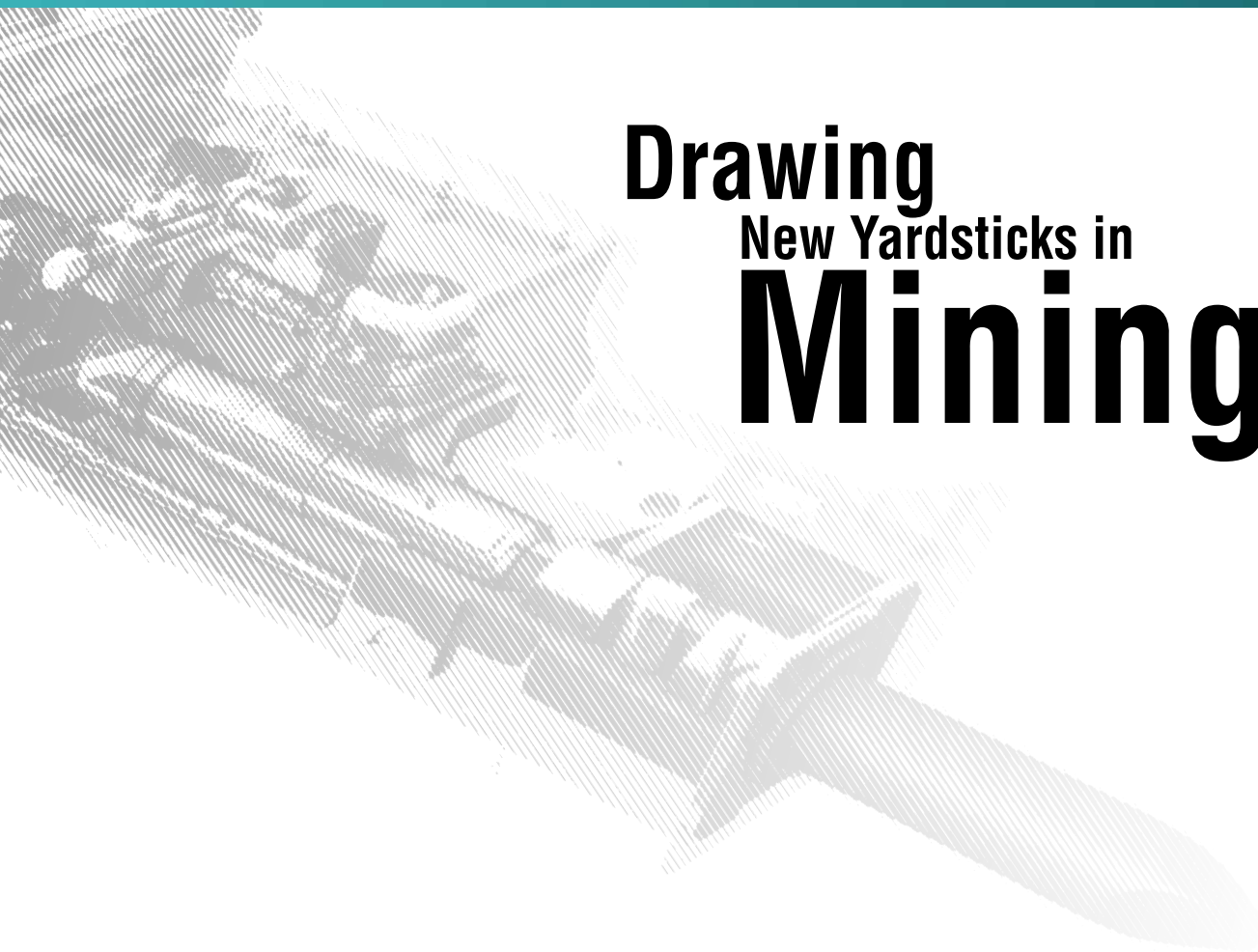




Drawing New Yardsticks in Mining...



Rhinoceeros Attachment Technology

Rhinoceros Vision 2030



The Company

Rhinoceros is the flagship brand of SGE Group of companies, having a diversified portfolio, ranging from trading, manufacturing to renting of construction equipment. We are a group of highly qualified professionals with vast experience in various aspects of the construction equipment industry. We have a range of top-of-the-line products, reasonably priced spares, a chain of knowledgeable service professionals and a pan-India dealer network.

Rhinoceros range of breakers are manufactured in a state of the art facility in South Korea. Manufactured with a strict compliance to highest global Quality standards, these equipment are designed to provide maximum customer satisfaction. Quality certifications like ISO 9001:2000, CE, TÜV, PCT, AEM, ISO, CIMA, Certificate of Reliability etc. certify the excellent quality of these equipment. These range of breakers & attachments have a strong presence across the world including in highly developed countries like USA, Canada, Columbia, UK, Spain, France, Sweden, Germany, Russia, Australia, New Zealand and many more.

Since our inception, it has been our endeavour to bring to our customers, equipment with the most advanced technology conforming to the highest international standards at the most competitive prices. We have one of the largest installation base of rock-breakers in India and have carved a niche for ourselves in After Sales Support. We envision a complete trust of our customers, assuring the fact that we will always deliver with unwavering accuracy.

Our journey of growth, with sheer hard-work, dedication and perseverance, has made us fully conscious of the virtues of honesty & integrity, and our customers identify us as a company which delivers what it promises.

Our motto "Inspiring Innovation Globally" enshrines these values and highlights our innovative approach in solving all the needs of our customers, working through our global partners.



Creating Innovative Benchmarks

Rhinoceros Attachments

INDEX	
Vision 2030	2
Advanced Technology	4
Breaker	6
General Crusher	8
Pulverizer	8
Compactor	8
Quick Coupler	9
Orange Grapple	9
Demolition Grapple	9
Screen Bucket	10
Clamshell	10
Transverse Cutting	10



Advanced Technology

We, *Rhinoceros*, have adopted the strict Quality Assurance System, which is essential for customer satisfaction. ISO certification, CE, TÜV mark and other intellectual property rights enable us to be one of the best breakers in the world.

Back Head

Installed the oil connections (input /output) and the gas valve.

- Maximized energy

The nitrogen gas in the back head is compressed once the piston moves upward by the oil pressure and accumulation of the energy, which is converted into the blow energy effectively as the piston descends.

Valve System

Specially designed valve system for:

- Structural Safety

The Safety increases efficiency and protection in housing and the valve provides smooth operation and control functions of the piston.

- Cylinder Regulator

The regulator increases working efficiency regulating the breaker power and the number of impacts by controlling moving distance of the piston.

- Valve Regulator

The Valve controls the oil flow and the rated pressure in the breaker.

Accumulator

The accumulator composed of a rubber film, is compressed by the nitrogen gas in the upper part and is connected with the cylinder at the blow part. It protects pump output or base machine.

- Shock Absorption System

The shock absorption system enhances equipment durability in impact and increases efficiency with oil supplements.

Piston

The piston is installed in the cylinder, which converts oil pressure into impact power to break rocks.

- Durability

Quality proven materials in intensity, anti-wear, heat resistance, enacity, anti-impact, internal pressure lengthen the life of piston.

- Post Management

The appropriate quality assurance system offers quality satisfaction.

Through Bolt

The 4 units of the bolts firmly fix the important components onto the breaker which reduce internal torsion stress to increase life.

Full Box Bracket

It protects inner body and reduces noise & maintenance.

Chisel

The Heat-treated tool for breaking rocks.

- Moil Point

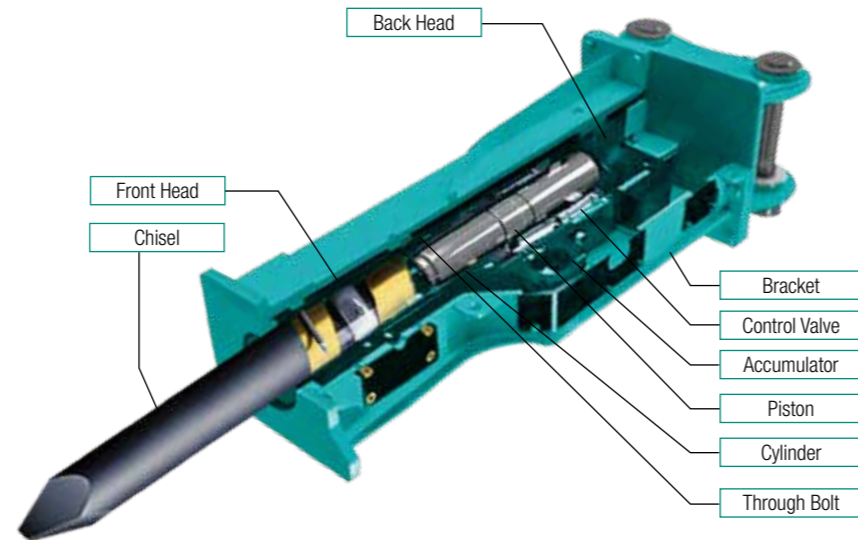
Suitable for most of demolition, road construction, pier work as well as civil engineering. It is a universal tool.

- Chisel (Wedge / In-line chisel)

Suitable for most of demolition, concrete cutting, digging, narrow trending as well as tunnel construction.

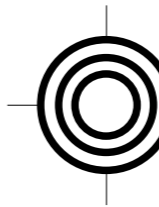
- Blunt end

Suitable for reducing over size boulders in mine as well as a quarry.



Rhinoceros Hydraulic Breaker Series

Maximizing productivity and reliability



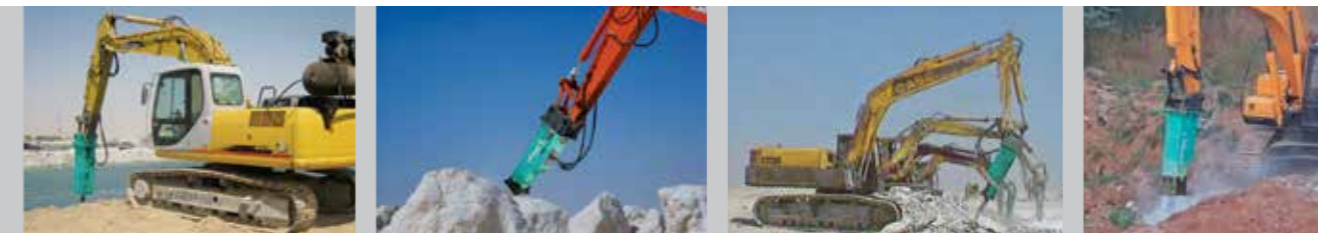
Minimizing maintenance and downtime

Right tools for all carriers and applications

Breaker Selection Guide (applicable carrier range and minimum required hydraulic power)

Model	Weight of carrier in ton (t)																Minimum Oil Flow lpm										
	1	2	3	4	5	6	7	8	9	12	14	16	18	20	25	26		27	33	34	35	45	46	47	50	55	60
Mini Size	SGB01	0.8	1.5	2.5																	15						
	SGB02	1.2	2.5	3.0																	20						
	SGB03	2.5	3.5	4.5																	25						
Small Size	SGB05	4.0	5.0	7.0																	40						
	SGB06	6.0	8.0	9.0																	50						
	SGB10	7.0	8.5	14.0																	60						
Medium Size	SGB13	11.0	15.0	16.0																	80						
	SGB17	15.0	16.0	18.0																	90						
	SGB25	18.0	20.0	21.0																	100						
Large Size	SGB30	25.0	28.0	30.0																	150						
	SGB40	30.0	40.0	41.0																	200						
	SGB50	40.0	45.0	55.0																	210						
	SGB60	46.0	52.0	65.0	70.0																	250					

* This guide is for reference purpose only for the normal excavators equipped with standard boom-arm.



Prime Series BA

- Applicable for the full range of earthmovers
- Adjustable blow speed to improve efficiency
- Oil flow adjustable to the wide range of carriers
- Better working convenience in small places
- Replaceable tool bushing
- Simple and efficient design
- Easier and faster maintenance
- Certified with Europe CE standard



TECHNICAL SPECIFICATIONS

Rhinoceros (SGmac) Model	Unit	SGB01	SGB02	SGB03	SGB05	SGB06	SGB10	SGB13	SGB25	SGB25 PLUS	SGB30	SGB30 PLUS	SGB40	SGB40 PLUS	SGB50
Selection of Machine	ton	0.5-1.5	1-3	2-4	4-7	6-9	7-14	12-16	18-21	18-26	27-35	28-35	35-45	30-45	40-55
Weight	kg	85	135	155	346	380	510	861	1500	1825	2100	2690	3200	2960	3990
Required Oil Flow Range	lpm	15-25	20-35	25-40	40-45	50-90	60-100	80-120	100-150	120-180	160-190	180-240	190-250	200-260	210-290
Operation Pressure	bar	90-120	90-120	90-120	110-140	110-140	130-160	150-170	160-180	160-180	160-180	160-180	160-180	160-180	160-180
Impact Rate	bpm	750-1200	650-1000	550-950	500-900	400-800	400-800	450-700	350-650	350-500	360-700	300-450	250-500	250-400	200-350
Impact Energy	joule	157	245	343	735	883	1373	2599	3555	4200	6129	6500	10199	9000	12000
Rod / Chisel	mm	40	46	53	68	75	85	100	135	140	150	155	160	165	175

Above specifications are subject to change without prior notice for quality improvement.



Attachment Series

General Crusher
General Crusher RSG Series
 It is designed for dismantling of Building.



Contents/Model		RSG Series					
		180MRC	250MRC	280MRC	320MRC	350MRC	420MRC
Total Weight	Kg	1150	1580	1850	2750	3500	5200
Total Length	mm	1800	2100	2280	2450	2600	2850
Max Opening Width	mm	0~750	0~890	0~960	0~1100	0~1250	0~1400
Crashing power A	kn	3620	5480	6311	7252	8820	11950
Crashing Power B	kn	1370	2050	2254	2695	3332	5194
Crashing Power C	kn	882	1117	1372	1175	2058	2744
Application Equipment	Ton	12~15	18~22	20~22	24~32	32~38	38~48

Pulverizer
Pulverizer (Secondary Crusher)
 It is designed for crushing of reinforced concrete.



Contents/Model		FSM Series				
		180F	250F	280F	320F	420F
Total Weight	Kg	950	1500	1750	2450	4200
Total Length	mm	1920	2020	2200	2350	2900
Max Opening Width	mm	0~700	0~880	0~950	0~1100	0~1280
Crashing power A	kn	1880	2175	2582	2636	3586
Crashing Power B	kn	774	980	1136	1205	1764
Crashing Power C	kn	597	735	842	901	1470
Application Equipment	Ton	12~15	18~22	20~22	24~32	35~48

Compactor
Hydraulic Compactor Series



Contents/Model		JST 40	JST 50	JST 81	JST 130
		Carrier Weight	ton	3~9	10~18
Working Power	ton	2~3	5~6	8~10	10~12
Vibration	cpm	2200	2200	2200	2200
Weight	kg	250	570	700	1250
Base Plate	mm	800 X 450	990 X 760	1300 X 850	1480 X 950
Working Pressure	Kg/cm ²	100~130	110~160	130~180	150~210
Working Flow	l/min	60	120	151	180

Above specifications are subject to change without prior notice for quality improvement.

Quick Coupler
Hydraulic Quick Coupler Series
 It is used for harden limp ground by vibrating.
 Each attachment can be changed easily by quick hitching.
 Safety is guaranteed by lock pin and check valve.



Contents/Model		JSQ 40	JSQ 50	JSQ 81	JSQ 130
		Carrier Weight	ton	3~6	7~15
Weight	Kg	55	120	250	450
Working Pressure	bar	40~300	40~300	40~300	40~300
Overall Height	mm	170	240	300	340
Width	mm	217~232	304~389	390~426	486~506
Overall Length	mm	500	680	770	870

Orange Grapple
Orange Grapple (Scrap Grab) Series
 Good design and robust structure
 Unlimited clockwise and anti-clockwise rotation
 Excellent performance at recycling job site
 Available for carrier vehicles from 2 to 40 tons



Contents/Model		JSS 80	JSS 81	JSS 130	JSS 151
		Capacity	Liter	400	500
Carrier Weight	Ton	12~18	18~25	25~32	32~45
Weight	Kg	680	865	1120	1610
Opening Width	mm	1700	1820	2000	2360
Closed Width	mm	1142	1268	1486	1774
Opening Height	mm	1192	1291	1443	1691
Closed Height	mm	1464	1567	1751	2037

Demolition Grapple
Demolition Grapple Series
 Clearing, demolition
 Garbage disposal
 Rock quarries
 Pipes & scrap iron & logs



Contents/Model		JSD 400	JSD 600	JSD 800	JSD 1200
		Capacity	Liter	300	500
Weight	Kg	900	1370	2100	2500
A	mm	1718	2000	2038	2070
B	mm	1058	1210	1502	1700
H	mm	1204	1444	1869	2050
HL	mm	1034	1270	1723	2000
Excavator	ton	6.5~18	18~25	28~35	35~42

Above specifications are subject to change without prior notice for quality improvement.



Screen Bucket Hydraulic Save Bucket Series



Contents/Model		JSB SW 10
Total Weight	Kg	1950
Total Length	mm	1480
The Full Width (Inside)	mm	1350
The Full Width (Outside)	mm	1520
Application Equipment	ton	28-30
Application Pressure	bar	150-200
Required Oil / Flow Range	l/min	150-200

Clamshell Hydraulic Clamshell Series



Contents/Model	JSM 50	JSM 61	JSM 200	
Capacity	Liter	500	700	920
Carrier Weight	Ton	12-18	18-25	50-60
Weight	Kg	720	980	1150
Opening Width	mm	1780	2100	2200
Closed Width	mm	1460	1620	1720
Opening Height	mm	1470	1495	1550
Closed Height	mm	1880	1980	2080

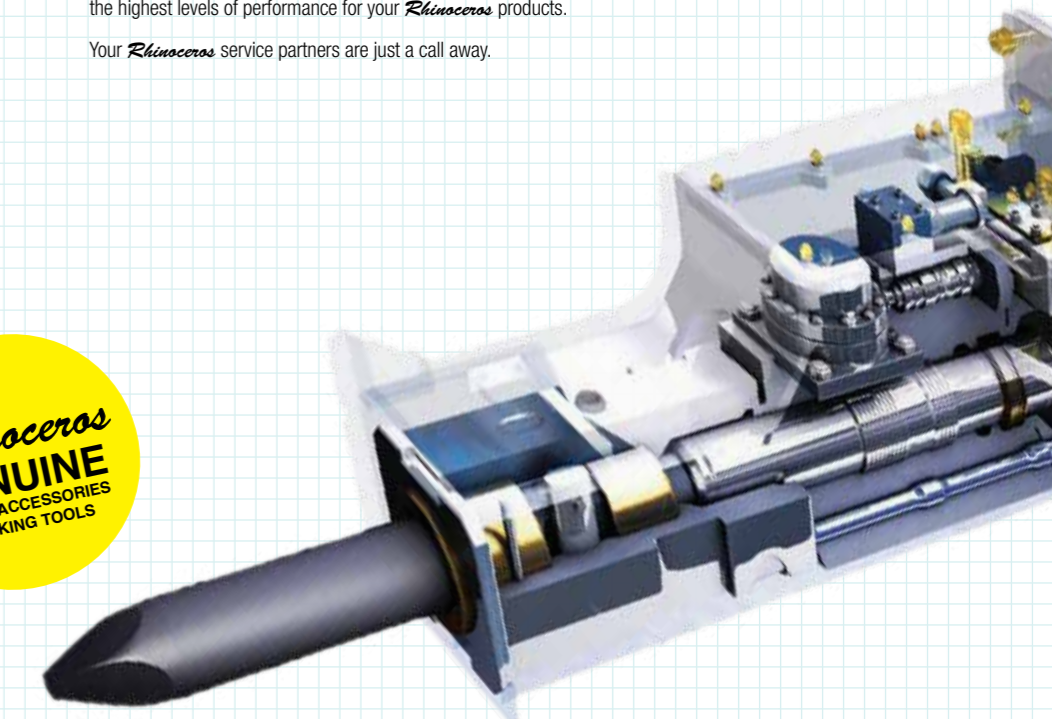
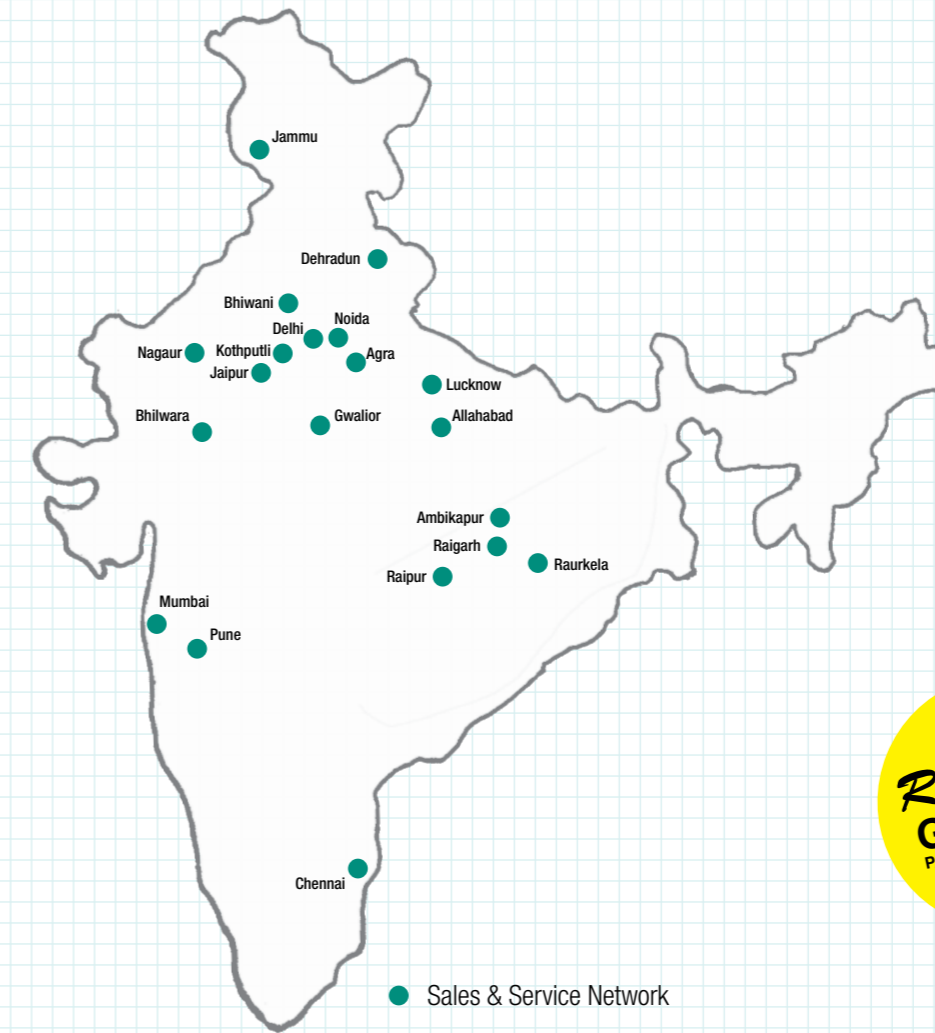
Transverse Cutting Hydraulic Transverse Series



Contents/Model	JTC 03	JTC 06	JTC 08	JTC 10	JTC 12	
Operating Weight	Kg	180	850	1000	1500	1800
Dream Width	mm	360	600	750	800	900
Operating Pressure	Kg/cm ²	150-170	150-200	160-220	200-240	200-270
Hose Diameter	inch	1/2	3/4	1		
Applicable Carrier	m3	0.3	0.6	0.8	1	1.4
	ton	2-5	6-16	18-22	28-32	35-50

Above specifications are subject to change without prior notice for quality improvement.

A network you can depend upon



Our service engineers and product specialists are available whenever and wherever you may need them. They guide you in selecting the right tools, help match the carriers and attachments, help make mechanical and hydraulic connections, as well as provide assistance in on-site applications.

Our authorized distributors and service partners are trained regularly to keep them update. This ensures that they provide competent support in all areas. A comprehensive after-sales service and a supply of genuine *Rhinoceros* spares, working tools and accessories, all in the best quality you have always experienced with *Rhinoceros*. Only genuine *Rhinoceros* spares ensure the highest levels of performance for your *Rhinoceros* products.

Your *Rhinoceros* service partners are just a call away.





Hydraulic Attachments by *Rhinoceros*



RHINOCEROS EQUIPMENTS PVT. LTD.

Regd. Office: 111, Holambi Kalan, Delhi-110082 (India)

Sales & Marketing: Tel.:+91120 4542240

E-mail: info@rhinoequipments.in Website: www.rhinoequipments.in

Authorised Dealer

* Photographs/Graphics shown in the catalogue may differ with actual products.